



## DIRECTIONS

A protected paddle in south to south-east winds from Frenchman Bay beach around the rocky headland and past Albany's Historic Whaling Station and Misery Beach before heading north and around Seal Island.

Look for seals resting on the rugged island or swimming in the clear water. On the way back to Frenchman Bay beach see if you can spot the the wreck of the HMAS Perth which is now a popular dive site.

Frenchman Bay has shady picnic sites to be enjoyed at the end of your paddle.

To travel to the start point from the Town Square (20km) drive down York Street and turn right (west) onto Princess Royal Drive. At Frenchman Bay Road turn left and follow the road to the end, past the turn-offs to many of Albany's major tourism attractions such as the Gap, Stony Hill and Whale World.

<b>Grade:</b>	S03
<b>Distance:</b>	10 kms circuit
<b>Time:</b>	2 to 2.5 hours
<b>Recommended Launch Point:</b>	Frenchman Bay beach/ boat ramp
<b>Alternative Launch Point</b>	Misery Beach boat ramp

## DESCRIPTION

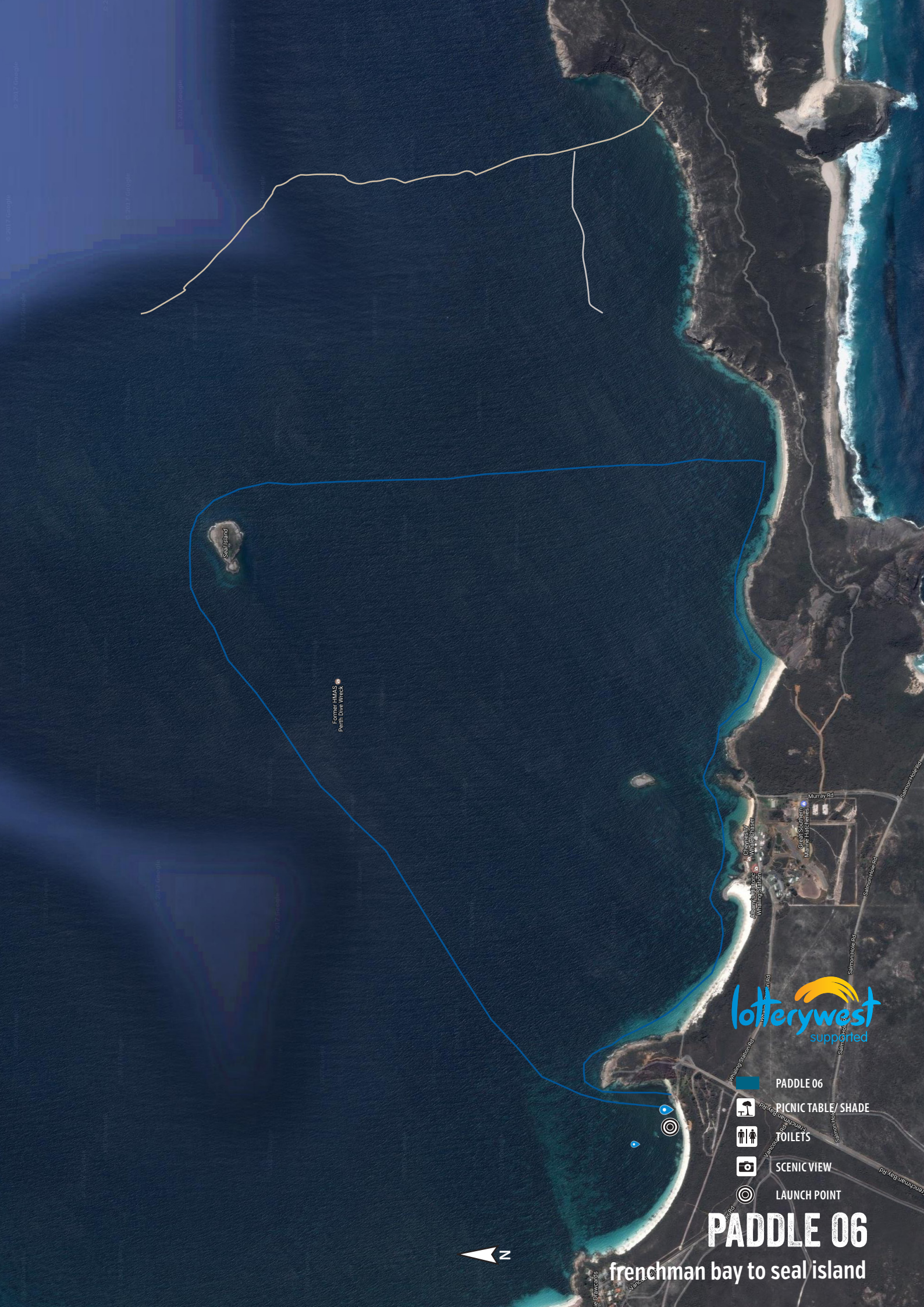
Launch from the sandy beach next to the boat ramp, with good 2WD access right to the beach edge. There are toilet and changeroom facilities available in the car park, which you will pass on the way down to the beach.

1. Depart the placid waters of Frenchman Bay by paddling alongside the rocks at the eastern end of the beach and round the granite headland which is very popular with local fishermen.
2. Once round the headland continue east enjoying the scenery along the beach while approaching the Whaling Station.
3. Take care and dart in and out of the rocks to take in the sights of the station from the water. View the spectacular old whaling ship and the eerie sights of a bygone era.
4. Continue east past the Misery Beach boat ramp and around the rocks to Misery Beach proper.
5. At the east end of the beach the dramatic cliffs of the Torndirrup Peninsula plunge into the crystal clear waters of King George Sound and provide an opportunity to look for the fish that call the rocks home.
6. Continue around the cliffs and beach until you are directly south of Seal Island before turning north to paddle to the island.
7. Head around the island to enjoy the rugged beauty of this area, which is home to a range of sea birds. See if you can spot the seals that often frequent the island and surrounds.
8. After rounding the island head south- west back to Frenchman Bay and along the way keep an eye out for the wreck of the HMAS Perth which is now a popular dive site.
9. After recovering your paddle craft enjoy a rest in the shady picnic site next to the beach.



**SAFETY FIRST!**










© 2017 Esri  
© 2017 Esri  
© 2017 Esri

Seal Island

Former BMWS  
Petrol Tank Wreck

Murray Rd  
Whaling Station  
Albany Whaling  
Whaling Station  
Walter Casser  
Great Southern  
Marine Hatcheries



-  PADDLE 06
-  PICNIC TABLE SHADE
-  TOILETS
-  SCENIC VIEW
-  LAUNCH POINT

# PADDLE 06

frenchman bay to seal island

